

KONICA 8050. GET READY TO CHANGE THE WAY YOU THINK ABOUT COLOUR.

The KONICA 8050 is a new breed of document system designed to improve the way you work with colour. With its speed, cost-effectiveness and unrivalled performance, the 8050 removes any obstacles that once stood in the way of using colour to its full advantage. It combines for the first time full colour printing at an affordable price with black & white document production at a competitive cost per page.

The KONICA 8050 will unquestionably change the face of colour printing and copying everywhere. How will it change you?



Paul Lennox, Managing Director:

“Quite honestly, it was the extremely attractive price per page that first convinced me. To be able to print our business documentation really fast, with a single system, combining professional colour and b/w, was what we had always been looking for!”



BENEFITS OF THE 8050 FEATURES



SPEED

- A rapid 51ppm (A4) in colour lets you print even extensive documentation in time for your important board meeting or client presentation.



PAPER MANAGEMENT

- Handling materials up to 256g/m², the KONICA 8050 enables you to produce invitations or showcards rather than outsourcing such jobs.



FINISHING

- Thanks to the 8050's extensive finishing options you can fold, staple, punch and trim your documents – for a truly professional output.



COLOUR + BLACK AND WHITE

- Versatility and flexibility – two products in a single system upgrades your capabilities and gives you back valuable floor space.



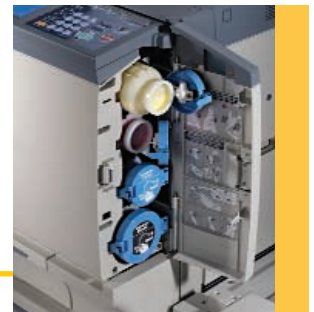
KONICA 8050. YOU HAVE THE POWER.

8050 means power! It's the power to manage all your colour document production yourself, in-house. It's the power to wow your customers with glossy, full bleed posters, with double-sided heavy stock handouts, with full colour saddle-stitched booklets. It's the power to complete job after job quickly and efficiently, with the same superior colour quality time after time.

The KONICA 8050 gives you this power at a more affordable price than you ever would imagine.



Large display for easy scanning and copying operation!



Toner refill possible on the fly!



Automatic bleeding with online Trimmer Unit!



Stephanie Rathcliffe, Marketing Manager:

“KONICA 8050 has really made the preparation of customer meetings and important presentations so much faster and easier for us! In the past it always took ages to print hundreds of pages from various applications, and having everything colourful and impressive.”



- Now, there's no need to have your company stationery printed externally!
With KONICA 8050 you can simply print your letterhead directly on to the paper while you print your correspondence – no more stocking up with company stationery, most of which you throw out because it's outdated!

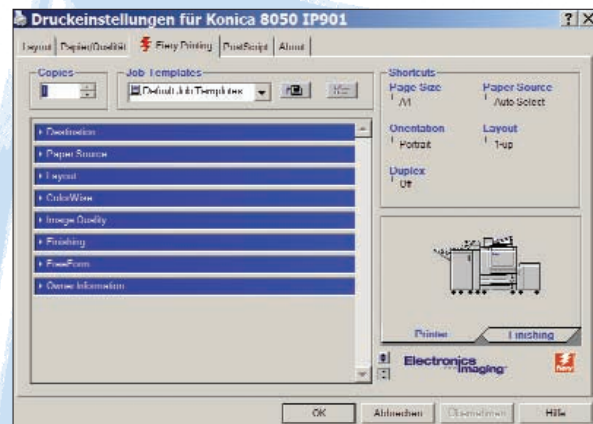


With just a few mouse clicks you and your team can control all print jobs for the KONICA 8050 from the PC or Mac.



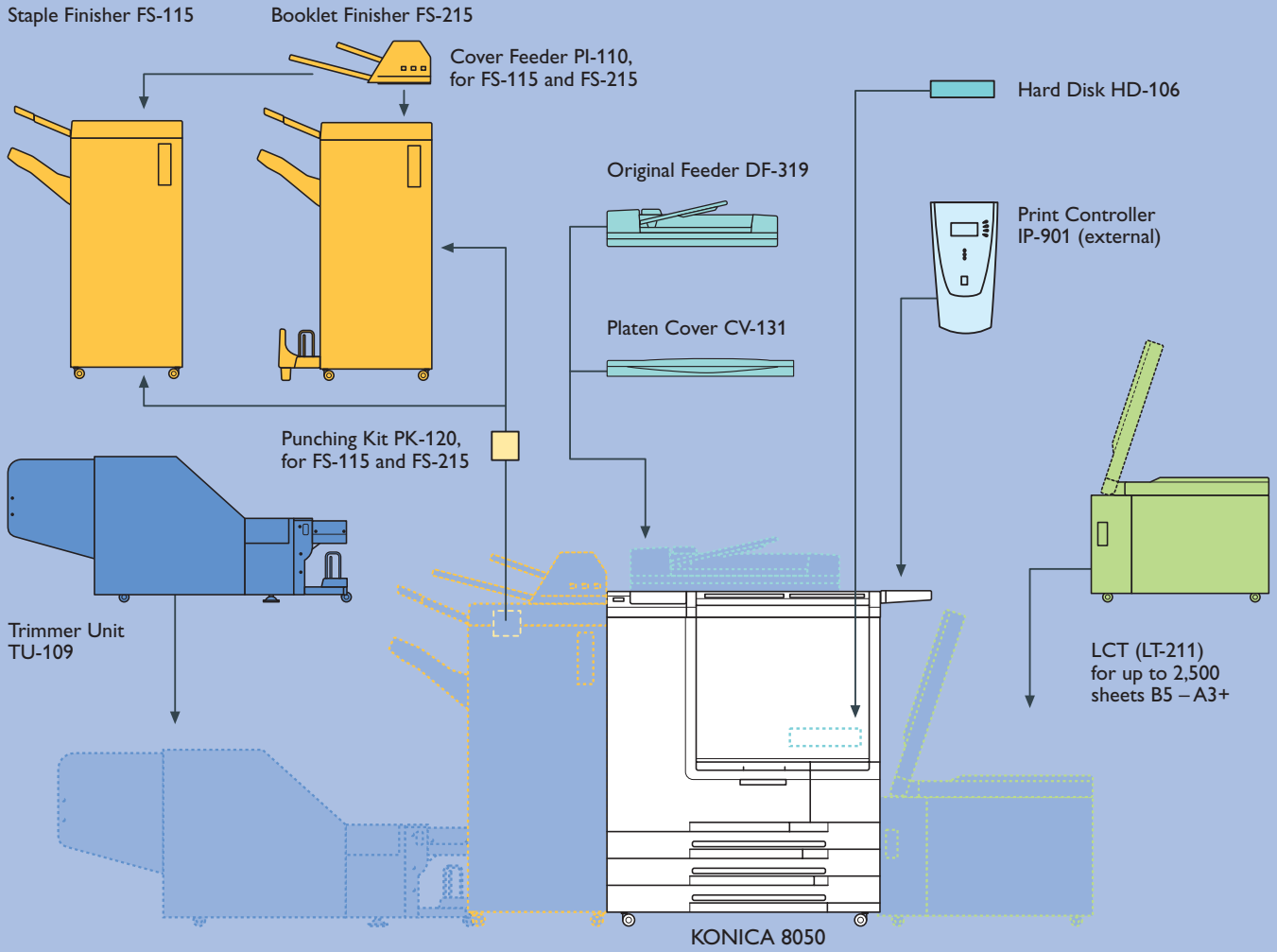
Add paper without interrupting the print run – max. paper supply 4,250 sheets!

- Configured with the Fiery print controller IP-901, KONICA 8050 can be your professional print centre for colour and b/w production. Simple operation, super-fast RIP times, and top print quality with the superfine KONICA polymerized toner, guarantee you professional documents, no matter how big or small the print run.
- Impress everyone with sophisticated finishing similar to what only your high-street printer could produce in the past. KONICA 8050 can be equipped with a variety of finishing features, such as single-position or booklet stapling, 4-hole punching, or 3-fold automatic letter folding. KONICA will help you choose the suitable configuration for your needs!



- Have your KONICA 8050 administrated via eKRDS, KONICA's remote diagnostics and service tool. Preventive maintenance as well as remote configuration adjustments via eKRDS connection (e.g. via e-mail) to the host in the KONICA service centre ensure optimum system availability, excellent output quality and top productivity.

CONFIGURATION POSSIBILITIES FOR THE KONICA 8050 COLOUR PRODUCTION SYSTEM



TECHNICAL SPECIFICATIONS KONICA 8050

Type

Desktop colour laser printer/copier with fixed platen

Print Technology

Laser based tandem technology (4 drums)

User Operation

Touch sensitive display

Memory Capacity

Std. 512 MB, plus 512 MB option (max. 1024 MB)

Original Size – ADF

max. A3 (max. 303 x 438 mm platen glass)

Paper Sizes

A5R – A3+ (max. 330 x 487 mm) from trays 1,2,3

A6R – A3+ (max. 330 x 487 mm) from bypass + LCT

Paper Weights

64 – 209g/m² (trays 1,2,3);

64 – 256g/m² (from bypass and LCT);

Duplex

A5 – A3+, paper weight: 64 – 209 g/m²

Paper Supply

3 x 500 sheets (universal) + 250 sheets (bypass)

Optional: 2,500 sheets (LCT); Total 4,250 sheets (90g/m²)

Exit Tray

150 sheets

Print Quantity Selection

1 – 9999

Speed

A4 = 51 ppm full colour; 51 ppm mono colour / b/w

A3 = 27 ppm full colour; 27 ppm mono colour / b/w

Resolution

600 x 600 dpi (copy/scan)

Halftones

256

Warm-up Time

Approx. 7 minutes

First Copy-Out Time

Approx. 7.6 sec. A4 (colour); approx. 6.0 sec. A4 (b/w)

Magnification

Zoom 25 – 400 % in 0.1% increments

Reductions: 0.866 / 0.816 / 0.707 / 0.500,

Enlargements: 1.154 / 1.224 / 1.414 / 2.000

Copy Functions

Simplex, Duplex, Frame Erase, Proof & Print

Image Manipulation Functions

X/Y Zoom, Mirror Image, Copy Density

(background, density, etc.)

Image Type (Originals)

Text, Photo, Text & Photo, Printed Image, Map Mode,

Photo Image, Copy, Inkjet

Special Functions

Interrupt, Book Copy, 2-in-1, 4-in-1, 8-in-1, Booklet;

Sheet/Cover Insertion (30 locations), Front/Back Cover

Colour Adjustment

Hue, Saturation, Brightness, Sharpness, Contrast, Colour

Balance, Density of R/G/B

eKRDS Remote Diagnostics System

Supports GSM, modem, and secure e-mail communication with attachment (DES encoding available)

Power Supply

230V; 50 Hz

Power Consumption

Max. 3,400 Watt full system

Dimensions (WxDxH)

794 x 889 x 1,056 mm (mainbody)

2,139 x 889 x 1,181 mm

(mainbody + DF-319 + FS-215 + LT-211)

Weight

316 kg (mainbody)

Accessories

Platen Cover (CV-131)

RADF (DF-319)

100 sheets (80g) A5 – A3,

Paper weight: Single-sided 35 – 200 g/m²,

Double-sided 50 – 200g/m²; OPM = 37 pages

LCT (LT-211)

2,500 sheets A4 (90g/m²);

Paper sizes B5 – A3+ (wide size 330 x 487mm)

Paper weight: 50 – 256g/m²;

Staple Finisher (FS-115)

Capacity: Non-staple 3,000 / staple mode 1,000 sheets;

3 positions / 50 sheets (80g/m²)

Booklet Finisher (FS-215)

Capacity: Non-staple 3,000 / staple mode 1,000 sheets;

4 positions / 50 sheets (80g/m²); Booklet: 20 sheets;

Three fold mode for up to 3 sheets per set

Punching Kit (PK-120)

Post Inserter (PI-110)

Trimmer Unit (TU-109)

Memory

4 x 256 MB (MU-412)

Hard Disk (HD-106)

Only for Watermarks and Stamp functions, Overlay etc.

IP-901 Fiery Print Controller

Print Speed (b/w / c)

51/51 ppm

Resolution

600 dpi

Processor

Intel Pentium 4.2 GHz

Memory

256 MB; upgrade max. 1 GB

Hard Drive

60 GB

Removable Media

DVD-ROM

Compression

ECT

Page Description Language

Adobe PS3

Standard Fonts

136

Interface

Ethernet (10/100/1000BaseT) RJ45, USB, RS-232

Protocols

EtherTalk; IPX/SPX(NDS);

TCP/IP, HTTP, SNMP, IPP

Printing Features

Rip-While-Print; Continuous Print; Electronic Collation;

Duplex; Sorting/Stapling; Booklet Printing; Thumbnail and

Full Screen Preview (CWS); Job Merging/Editing (CWS);

Fast Reprint; Media Server; Variable Data Printing

Twain (Remote Scanning)

and other scanning features

PostScript Drivers

Macintosh V.8.x / 9.2.2 / OS.x

Windows 95/98/2000/NT4/XP

IP-901 Accessories

FACI Kit

Fiery Advanced Graphic Interface

DocBuilder Pro Vers. 1.5

Retro-compatible

ES-1000

EFI ICC Profile Creation Tool

ED-100

EFI Densitometer

ZIP-250 Drive

EFI Graphic Arts Package

Pageflex Persona

Variable Data Printing Solution

The availability of the special functions listed above depends on the optional accessories installed on KONICA 8050.

All indications regarding paper, original and output capacities refer to the max. capacity based on standard 80g/m² paper if not indicated otherwise.

Technical Specifications subject to change without notice! Latest valid technical specifications can be obtained from your KONICA partner. Status: 07/2003.





**KONICA DOCUMENT SOLUTIONS –
BECAUSE YOU’LL APPRECIATE ACCOMPLISHING YOUR
TASKS WITH SOLUTIONS THAT FIT THE BILL.**

Our wealth of experience plus our ceaseless striving for innovation form the basis for the development of the unique KONICA Document Solutions. As one of Europe’s leading companies for document management systems and technology, KONICA offers progressive and economically oriented companies tailor-made solutions for the entire spectrum of document production and document management.

KONICA Document Solutions stands for intelligent and technologically sound concepts, which offer you state-of-the-art production systems and document software as well as competent and individual consulting.

No matter whether you work from home, for a large enterprise, or in a professional printing house – KONICA helps you reach your goals both in terms of organisation and economy, all over Europe. Look forward to perfect solutions. Your KONICA system consultant looks forward to meeting you and tackling your challenging tasks.

Your KONICA partner

