



DiALTA Color™

CF 5001

The essentials of imaging



51 **COLOR**
pages/min
A4 crosswise

MINOLTA CF5001.

GET READY TO CHANGE THE WAY YOU THINK ABOUT COLOUR.

The CF5001 is a new breed of document system designed to improve the way you work with colour. With its speed, cost-effectiveness and unrivalled performance, the CF5001 removes any obstacles that once stood in the way of using colour to its full advantage.

It combines for the first time full colour printing at an affordable price with black & white document production at a competitive cost per page.

The CF5001 will unquestionably change the face of colour printing and copying everywhere. How will it change you?



Paul Lennox, Managing Director:

"Quite honestly, it was the extremely attractive price per page that first convinced me. To be able to print our business documentation really fast, with a single system, combining professional colour and b/w, was what we had always been looking for!"



BENEFITS OF THE CF5001 FEATURES



SPEED

- A rapid 51ppm (A4) in colour lets you print even extensive documentation in time for your important board meeting or client presentation.



PAPER MANAGEMENT

- Handling materials up to 256g/m², the CF5001 enables you to produce invitations or show cards rather than outsourcing such jobs.



FINISHING

- Thanks to the CF5001's extensive finishing options you can fold, staple, punch and trim your documents – for a truly professional output.



COLOUR + BLACK AND WHITE

- Versatility and flexibility – two products in a single system upgrades your capabilities and gives you back valuable floor space.



MINOLTA CF5001. YOU HAVE THE POWER.

CF5001 means power! It's the power to manage all your colour document production yourself, in-house. It's the power to wow your customers with glossy, full bleed posters, with double-sided heavy stock handouts, with full colour saddle-stitched booklets. It's the power to complete job after job quickly and efficiently, with the same superior colour quality time after time.

The CF5001 gives you this power at a more affordable price than you ever would imagine.



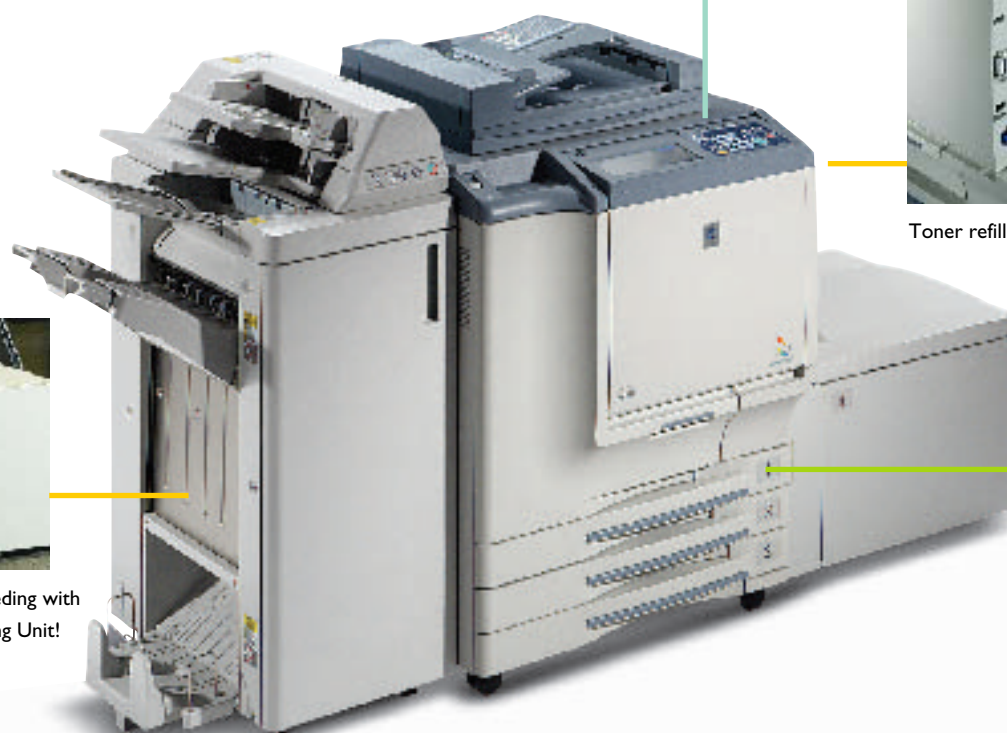
Large display for easy scanning and copying operation!



Toner refill possible on the fly!



Automatic bleeding with online Trimming Unit!



Stephanie Rathcliffe, Marketing Manager:

“The CF5001 has really made the preparation of customer meetings and important presentations so much faster and easier for us! In the past it always took ages to print hundreds of pages from various applications, and having everything colourful and impressive.”



- Now, there's no need to have your company stationery printed externally!
With the CF5001 you can simply print your letterhead directly on to the paper while you print your correspondence – no more stocking up with company stationery, most of which you throw out because it's outdated!

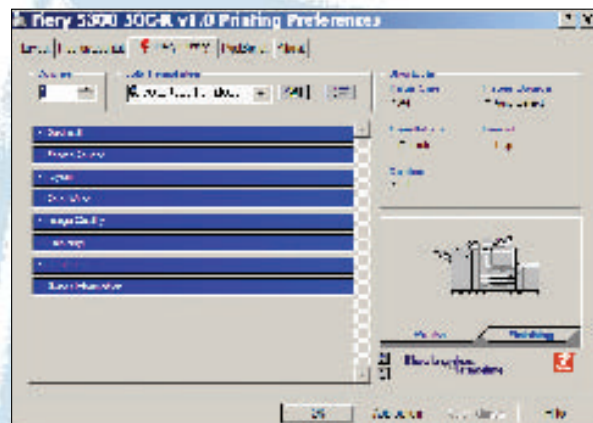


With just a few mouse clicks you and your team can control all print jobs for the CF5001 from the PC or Mac.

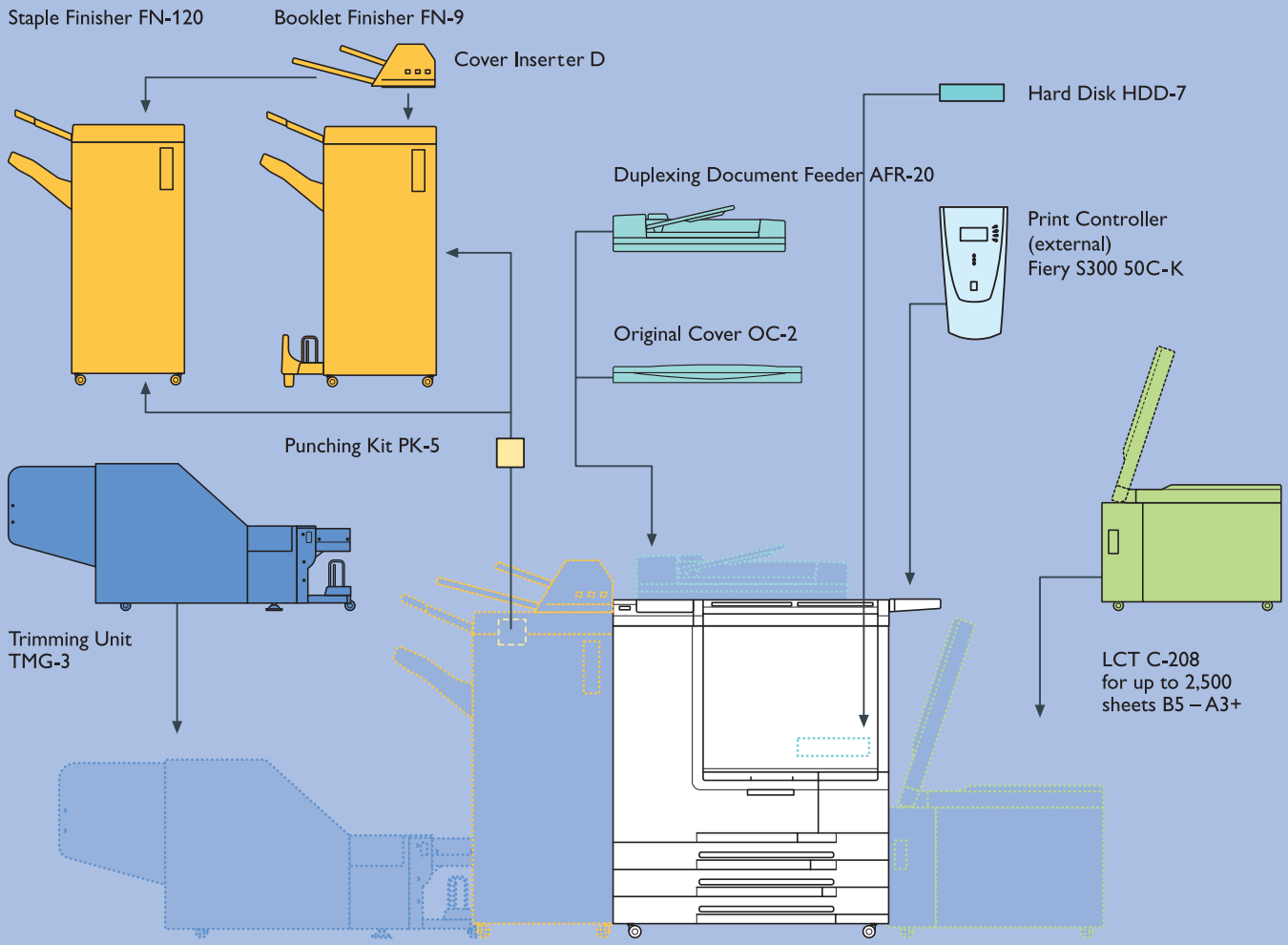


Add paper without interrupting the print run – max. paper supply 4,250 sheets!

- Configured with the Fiery print controller S300 50C-K, the CF5001 can be your professional print centre for colour and b/w production. Simple operation, super-fast RIP times, and top print quality with the superfine polymerized toner, guarantee you professional documents, no matter how big or small the print run.
- Impress everyone with sophisticated finishing similar to what only your high-street printer could produce in the past. The CF5001 can be equipped with a variety of finishing features, such as single-position or booklet stapling, 4-hole punching, or 3-fold automatic letter folding. MINOLTA will help you choose the suitable configuration for your needs!



CONFIGURATION POSSIBILITIES FOR THE CF5001 COLOUR PRODUCTION SYSTEM



TECHNICAL SPECIFICATIONS MINOLTA CF5001

Type

Desktop colour laser printer/copier with fixed platen

Print Technology

Laser based tandem technology (4 drums)

User Operation

Touch sensitive display

Memory Capacity

Std. 512 MB, plus 1024 MB option (max. 1536 MB)

Original Size

max. A3 (max. 303 x 438 mm platen glass)

Paper Sizes

A5R – A3+ (max. 330 x 487 mm) from trays 1,2,3

A6R – A3+ (max. 330 x 487 mm) from bypass + LCT

Paper Weights

64 – 209g/m² (trays 1,2,3)

64 – 256g/m² (from bypass and LCT)

Duplex

Paper Size: A5 – A3+

Paper Weight: 64 – 209 g/m²

Paper Supply

Standard: 3 x 500 sheets (universal) + 250 sheets (bypass)

Optional: 2,500 sheets (LCT)

Exit Tray

150 sheets

Print Quantity Selection

1 – 9999

Speed

A4 = 51 ppm full colour, 51 ppm mono colour / b/w

A3 = 27 ppm full colour, 27 ppm mono colour / b/w

Resolution

600 x 600 dpi (copy/scan)

Halftones

256

Warm-up Time

Approx. 7 minutes

First Copy-Out Time

Approx. 7.6 sec. A4 (colour), approx. 6.0 sec. A4 (b/w)

Magnification

Zoom 25 – 400 % in 0.1% increments

Reductions: 0.866 / 0.816 / 0.707 / 0.500

Enlargements: 1.154 / 1.224 / 1.414 / 2.000

Copy Functions

Simplex, Duplex, Frame Erase, Proof & Print

Image Manipulation Functions

X/Y Zoom, Mirror Image, Copy Density

(background, density, etc.)

Image Type (Originals)

Text, Photo, Text & Photo, Printed Image, Map Mode,

Photo Image, Copy, Inkjet

Special Functions

Interrupt, Book Copy, 2-in-1, 4-in-1, 8-in-1, Booklet, Sheet/Cover Insertion (30 locations), Front/Back Cover

Colour Adjustment

Hue, Saturation, Brightness, Sharpness, Contrast, Colour Balance, Density of R/G/B

Power Supply

230 V 50 Hz

Power Consumption

Max. 3,400 Watt full system

Dimensions (WxDxH)

794 x 889 x 1,056 mm (mainbody)

2,139 x 889 x 1,181 mm

(mainbody + DF-319 + FS-215 + LT-211)

Weight

316 kg (mainbody)

Accessories

Original Cover (OC-2)

Duplexing Document Feeder (AFR-20)

Paper Capacity: 100 sheets (80g/m²)

Paper Size: A5 – A3

Paper Weight: Single-sided 35 – 200 g/m²,

Double-sided 50 – 200g/m², OPM = 37 pages

LCT (C-208)

Paper Capacity: 2,500 sheets A4 (90g/m²)

Paper Size: B5 – A3+ (wide size 330 x 487mm)

Paper Weight: 50 – 256g/m²

Staple Finisher (FN-120)

Paper Capacity: Non-staple 3,000 sheets

Staple 1,000 sheets

Staple: 3 positions : 50 sheets (80g/m²)

Booklet Finisher (FN-9)

Paper Capacity: Non-staple 3,000 sheets

Staple 1,000 sheets

Staple: 4 positions : 50 sheets (80g/m²), Booklet: 20 sheets

Three Fold: Up to 3 sheets per set

Punch Kit (PK-5)

Cover Inserter D

Trimming Unit (TMG-3)

Memory (M256-3)

Hard Disk (HDD-7)

Only for Watermarks and Stamp functions, Overlay etc.

Fiery S300 50C-K Print Controller

Print Speed (b/w / c)

51/51 ppm

Resolution

600 dpi

Processor

Intel Pentium 4.2 GHz

Memory

256 MB (upgrade max. 1 GB)

Hard Drive

60 GB

Removable Media

DVD-ROM

Compression

ECT

Page Description Language

Adobe PS3

Standard Fonts

136

Interface

Ethernet (10/100/1000Base-T) RJ45, USB, RS-232

Protocols

EtherTalk, IPX/SPX(NDS),

TCP/IP, HTTP, SNMP, IPP

Printing Features

Rip-While-Print, Continuous Print, Electronic Collation, Duplex, Sorting/Stapling, Booklet Printing, Thumbnail and Full Screen Preview (CWS), Job Merging/Editing (CWS), Fast Reprint, Media Server, Variable Data Printing

PostScript Drivers

Macintosh V.8.x / 9.2.2 / OS.x

Windows 95/98/2000/NT4/XP

The availability of the special functions listed above depends on the optional accessories installed on the CF5001.

All indications regarding paper, original and output capacities refer to the max. capacity based on standard 80g/m² paper if not indicated otherwise.

Technical Specifications subject to change without notice!





**MINOLTA DOCUMENT SOLUTIONS –
BECAUSE YOU’LL APPRECIATE ACCOMPLISHING YOUR
TASKS WITH SOLUTIONS THAT FIT THE BILL.**

Our wealth of experience plus our ceaseless striving for innovation form the basis for the development of the unique MINOLTA Document Solutions. As one of Europe’s leading companies for document management systems and technology, MINOLTA offers progressive and economically oriented companies tailor-made solutions for the entire spectrum of document production and document management.

MINOLTA Document Solutions stands for intelligent and technologically sound concepts, which offer you state-of-the-art production systems and document software as well as competent and individual consulting.

No matter whether you work from home, for a large enterprise, or in a professional printing house – MINOLTA helps you reach your goals both in terms of organisation and economy, all over Europe. Look forward to perfect solutions. Your MINOLTA system consultant looks forward to meeting you and tackling your challenging tasks.

Your MINOLTA partner

KONICA MINOLTA BUSINESS TECHNOLOGIES, INC.

Marunouchi Center Building, No.6-1, Marunouchi 1-chome, Chiyoda-ku, Tokyo, 100-0005, Japan